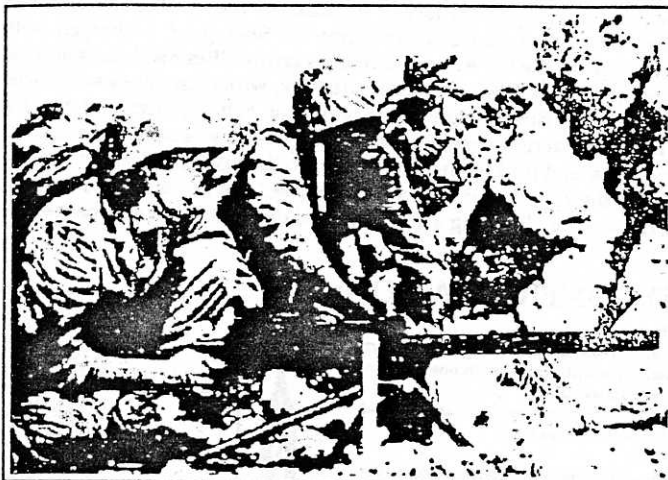


# THE PINNACLE



## SCENARIO BB7



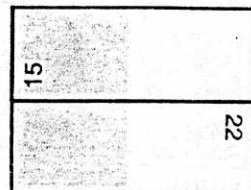
IE SHIMA, 21 April 1945: The 1st Battalion of the 306th pushed through the town of Ie and had reached positions near the Government House and the lower slopes of the legusugu Pinnacle. The Pinnacle was the nerve center of the Japanese defenses on the island, with fire from it causing the Americans many casualties in the preceding days. After beating off several fierce Japanese attacks during the night, the 306th was ready to attack the final Japanese bastion on Ie Shima.

### BOARD CONFIGURATION:

#### HANDICAPS:

- U3: Use U2, and add one 3-4-7 and one Japanese DC to the Japanese OB.
- U2: Use U1, and delete one 7-4-7 and one DC from the U.S. OB.
- U1: Add two 3-3-6s to the Japanese OB.

- J1: Delete both Roadblocks and the 3 AT Mine factors from the Japanese OB.
- J2: Use J1, and replace six 6-6-6s with six 6-6-7s in the U.S. OB.
- J3: Use J2, and increase the game length to 8 1/2 turns.



(Only hexrows A-P on board 15 and R-GG on 22 are playable)

**VICTORY CONDITIONS:** The U.S. wins at game end if they Control building 22X7, and hexes 15N4 and 15N5.

### TURN RECORD CHART

|                                |     |   |   |   |   |   |   |   |     |
|--------------------------------|-----|---|---|---|---|---|---|---|-----|
| ● JAPANESE Sets Up First [215] | ★ 1 | 2 | 3 | 4 | 5 | 6 | 7 | 8 | END |
| ★ U.S. Moves First [276]       |     |   |   |   |   |   |   |   |     |

Elements of the 1st Battalion, 2nd Infantry Unit, 44th Independent Mixed Brigade (Igawa Unit) [ELR:4] set up on boards 15/22 on/north of any board 22 hexes numbered  $\geq 4$  (See SSR 3): [SAN: 5]

|              |              |              |            |      |     |     |                  |             |                 |                      |            |               |
|--------------|--------------|--------------|------------|------|-----|-----|------------------|-------------|-----------------|----------------------|------------|---------------|
| 1<br>4-4-7 v | 2<br>3-4-7 i | C<br>3-3-6 k | 6<br>2-2-8 | 10-1 | 9-0 | 8-1 | B<br>HMG<br>6-14 | MMG<br>4-11 | D<br>LMG<br>2-6 | D<br>MTR<br>50-1-16* | DC<br>30-1 | ?<br>7 morale |
| 3            | 7            | 6            | 7          |      |     |     | 2                | 3           | 4               | 2                    | 10         |               |

|            |           |      |               |            |       |       |   |
|------------|-----------|------|---------------|------------|-------|-------|---|
| 18 factors | 3 factors | 150* | 70* [(3)*-70] | +25LL (12) | 1+5+7 | 1+4+6 | 2 |
|            |           | 2    | 3             | 7          | 2     |       |   |

Companies A and B, 1st Battalion, 306th Regiment, 77th Division [ELR: 4] set up on board 22 in hexes numbered  $\leq 3$ : [SAN: 3]

|            |            |     |     |     |     |     |             |             |                  |                        |            |            |
|------------|------------|-----|-----|-----|-----|-----|-------------|-------------|------------------|------------------------|------------|------------|
| E<br>7-4-7 | 1<br>6-6-6 | 9-2 | 9-1 | 8-1 | 8-0 | 7-0 | MMG<br>6-12 | MMG<br>4-10 | MTR<br>60 [3-45] | F-BAZ 45<br>WP6<br>8-5 | DC<br>30-1 | FT<br>24-1 |
| 4          | 20         |     |     |     |     |     | 2           | 2           | 3                | 4                      | 4          | 2          |

Elements of the 306th Regimental Cannon Company and 706th Tank Battalion enter on Turn 1 along the South edge of board 22:

|          |           |          |
|----------|-----------|----------|
| 15<br>75 | 24<br>76L | 17<br>75 |
| 2        | 2         |          |

#### SPECIAL RULES:

- EC are Dry with no wind at start. Coral Soil (G13.82) is in effect. The 22R7 bridge does not exist. Kindling attempts are NA.
- The stream is Dry. Hexes 15F2, 15F3, and 15G3 are considered Level 2 hill hexes. The Cliff depictions along hex 15F2 still exist.
- The G11.91 subtractions for Upper Cliff caves (G11.113) are NA. Pillboxes may not set up on hill hexes. A-P Mines may not be exchanged for A-T Mines/Daisy Chains.
- The U.S. receive one module of 120-mm NOBA (G14.6; HE and WP), directed by a 2-2-7 crew which is this battery's Shore Fire-Control Party (G14.61); all LOF (G14.62, 11.84) for this battery is traced through 22Y1.

5 The U.S. 7-4-7s are Assault Engineers (H1.22). American AFVs may not enter Level 3 or 4 hill hexes. **AFTERMATH:** The attack jumped off just after dawn supported by naval gunfire and self propelled guns. The Government House was captured and then used as a MG position to support the troops' final assault on the Pinnacle. The Pinnacle rose sharply 600 feet from the surrounding countryside and the Japanese had dug numerous caves into its imposing structure. The men of the 306th scaled the sheer sides and, using demolition charges and flamethrowers, managed to raise the American flag atop the hill at 1025 hours. While the Japanese would use the many tunnels dug into the surrounding area to infiltrate and harass the Americans for several days to come, Ie Shima was on it's way to becoming a vital air base for U.S. operations against Okinawa and Japan.